

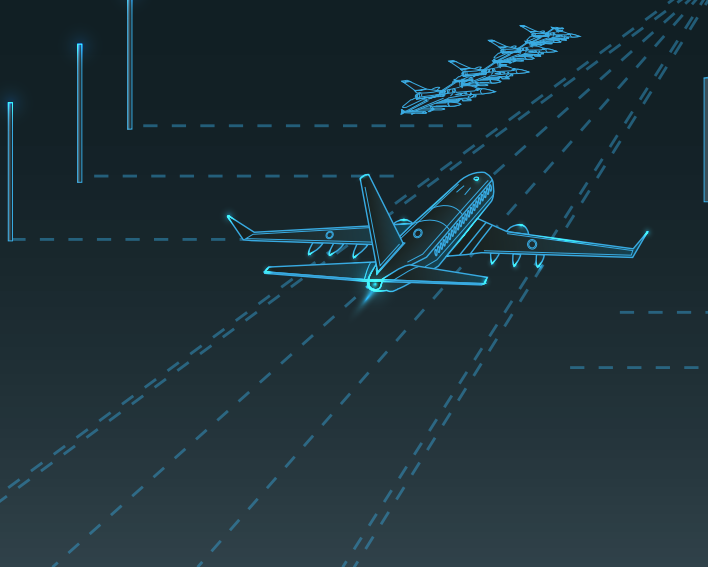
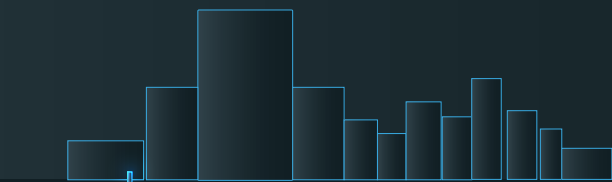
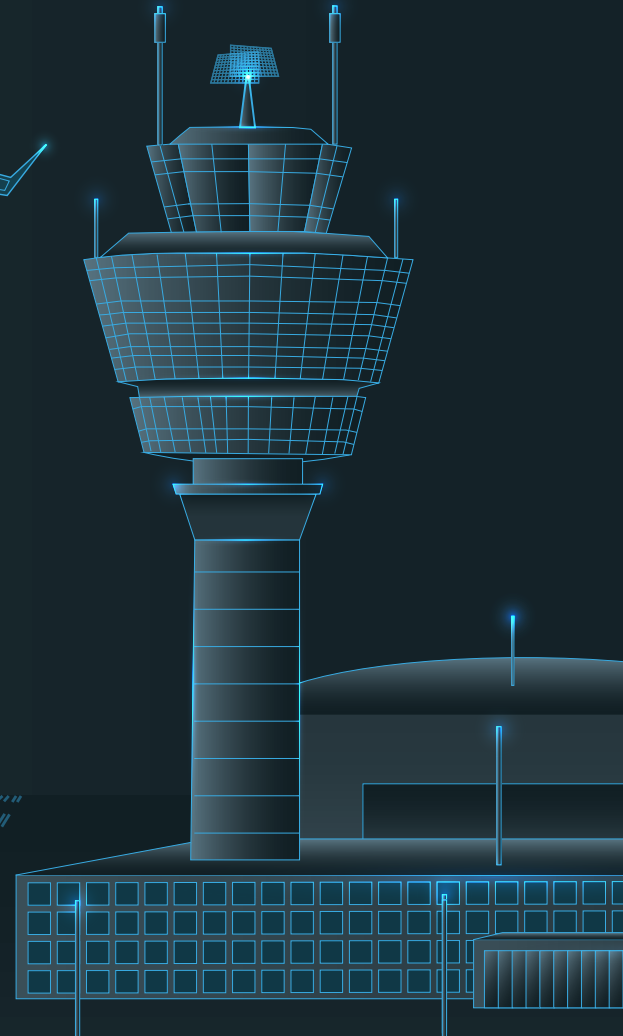
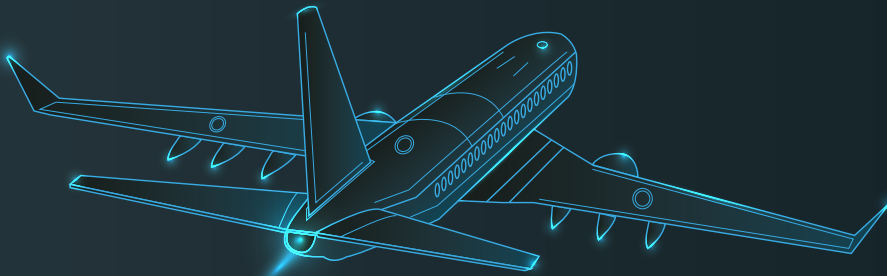


POLOMARCONI.IT

®

# ATC

# AIR TRAFFIC CONTROL





## ATC – AIR TRAFFIC CONTROL

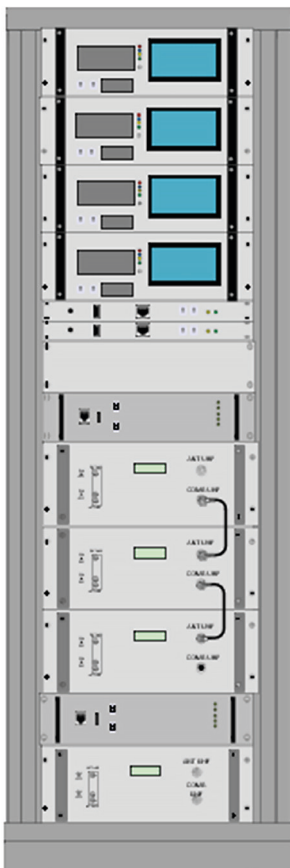
With a legacy spanning over two decades, [POLOMARCONI.IT](https://www.polomarconi.it) has been a trusted industry leader, specializing in the design and manufacturing of high-quality ATC antennas, filters, combiners, high power amplifiers, and components.

Our dedicated focus lies in ground-to-air communication systems, serving the needs of civil authorities and military forces across the world.

Choose [POLOMARCONI](https://www.polomarconi.it) for superior quality and reliability in ATC solutions, ensuring seamless communication for a safer world.



## Extensive Portfolio - Customization Capabilities



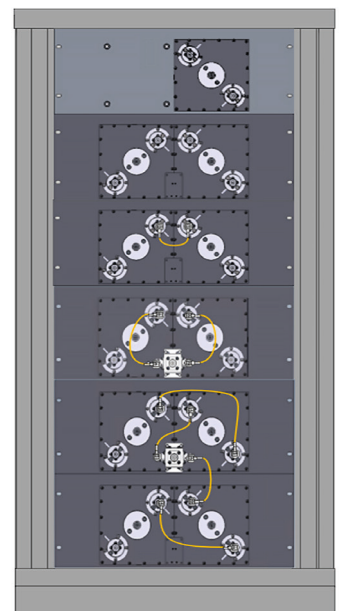
**POLOMARCONI** ATC portfolio comprises VHF/UHF collinear dipoles, directive, and omnidirectional antennas, VHF/UHF manual and automatic cavity filters, fixed-frequencies or remote controlled combiners in double-bridge, star point or chain configurations, Rx multicouplers, low/high pass filters, duplexers, isolators, circulators and VSWR-meters

Our approach is to offer the end customer a solution that best meets their needs, actively participating in the drafting of specifications.

The portfolio also includes VHF/UHF high power amplifiers.

**POLOMARCONI** collaborates with its clients through:

- Special projects
- Design review of client products
- Restyling existing products
- Co-design with the client's R&D



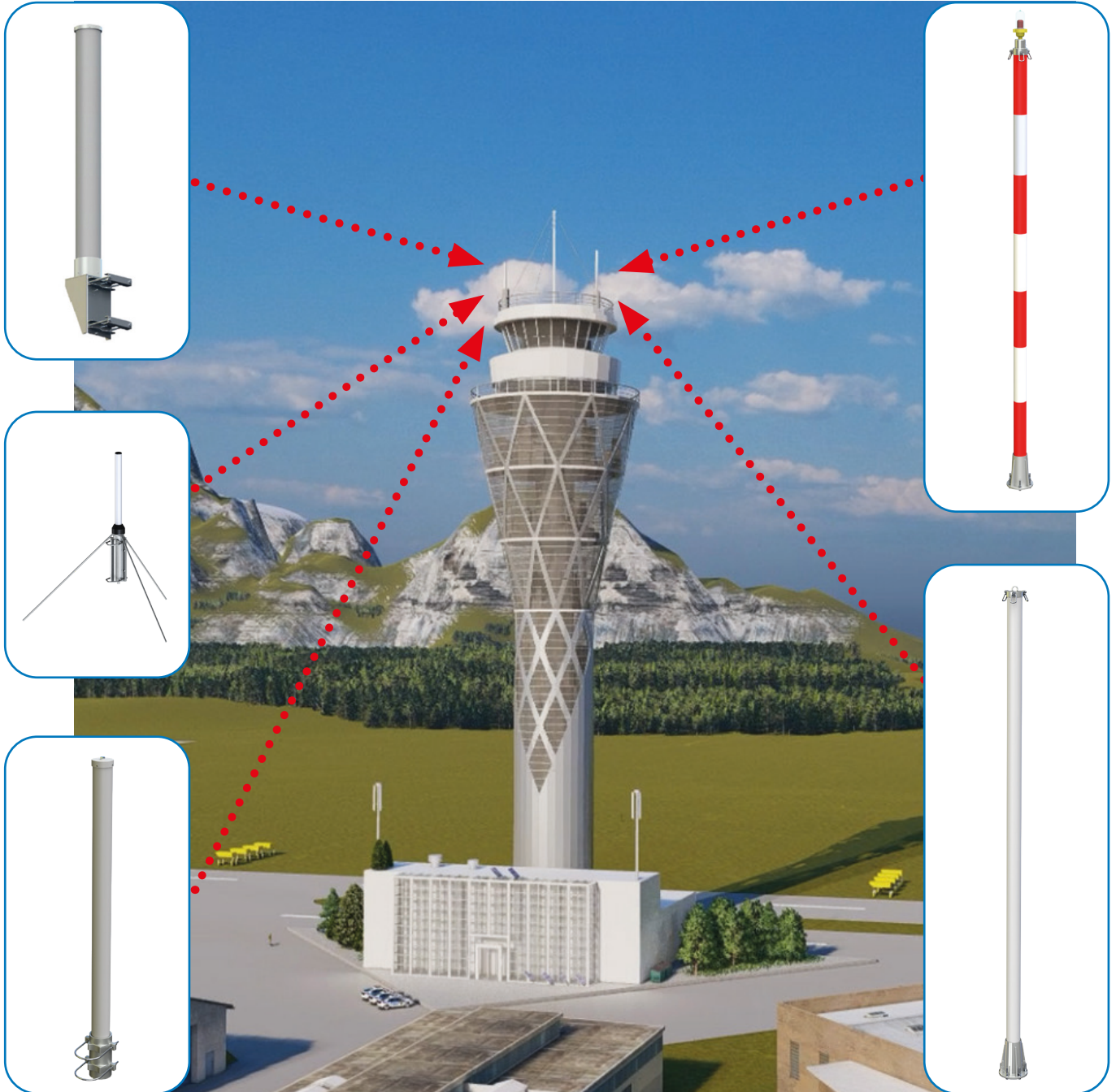


# OMNIDIRECTIONAL ANTENNAS VHF-UHF

ATC

POLOMARCONI.IT

POLOMARCONI offers a very wide range of wireless products.  
Our products can be tailored according to the customer's need.





# OMNIDIRECTIONAL ANTENNAS VHF-UHF

ATC

POLOMARCONI.IT

POLOMARCONI offers a very wide range of wireless products.  
Our products can be tailored according to the customer's need.

Part Number ID	Description	Number of Dipoles	Frequency Range (MHz)	GAIN typical (dBi)	Isolation (dB) $\geq$	Max Input Power (W) $\leq$	Weight (Kg) $\leq$	Height (mm)
<b>T01913006</b>	Broadband Omnidirectional Dipole	1	100-200	2		500	11	1018
<b>T01110401</b>	Omni 1 Dipole VHF	1	108-156	2		500	7	1200
<b>T01110402</b>	Omni 1 Dipole VHF	1	118-137	2,15		200	2,8	1350
<b>T01110429</b>	Omni 1 Dipole VHF	1	118-137	2,15		200	3	1518
<b>R-4.06.028.01</b>	Omni folded dipole VHF	1	117-137	2,15		200	4	1100
<b>T01110403</b>	Omni 1 Dipole VHF Ground plane	1	118-137	2		100	2,5	780
<b>T01110407</b>	Omni 1 Dipole VHF with brackets	1	108-156	2		500	7	1600
<b>T01110419</b>	Omni 1 Dipole VHF pole mounting	1	108-156	2		200	2,5	1400
<b>T01110425</b>	Omni 1 Dipole VHF High Contrast Color	1	108-156	2		500	7	1305
<b>T01110426</b>	Omni 1 Dipole VHF High Contrast Color, Obstruction Light	1	118-156	2		500	10,5	2110
<b>T01110601</b>	Omni 1 Dipole UHF, 225-400 MHz	1	225-400	2		500	4,7	840
<b>T01110621</b>	Omni 1 Dipole UHF, 225-400 MHz, High Contrast Color	1	225-400	2		500	4,7	840
<b>T01110607</b>	Omni 1 Dipole UHF, 225-400 MHz, with brackets	1	225-400	2		500	4,7	840
<b>T01110618</b>	Omni 1 Dipole UHF, 225-400 MHz, pole mounting	1	225-400	2		500	1,8	820
<b>T01110619</b>	Omni 1 Dipole UHF, 225-400 MHz, pole mounting	1	225-400	2		200	2	820
<b>T01110622</b>	Omni 1 Dipole UHF, 225-400 MHz, Obstruction Light	1	225-400	2		500	8	1460
<b>13300020</b>	SF 120 Omni VHF 118-148 MHz	1	118-148	2,15		200	2	1300
<b>R-4.05.039.01</b>	Omni folded dipole VHF	2	117-137	5		300	9	3700
<b>T01120405</b>	Omni 2 Dipoles VHF 1 input	2	108-156	5		300	32	4370
<b>T01120403</b>	Omni 2 Dipoles VHF 2 inputs	2	108-156	2	27	500	31	4129
<b>E01120403</b>	Omni 2 Dipoles VHF 2 inputs	2	118-137	2	30	500	31	4500
<b>T01120410</b>	Omni 2 Dipoles VHF 2 inputs, Harsh Environmental Sites	2	108-156	2	27	200	79	4820
<b>T01120413</b>	Omni 2 Dipoles VHF 2 inputs, High Contrast Color, Obstruction Light	2	108-156	2	27	200	35	4600
<b>T01120459</b>	Omni 2 Dipoles VHF 2 inputs, High Contrast Color	2	108-156	2	27	200	31	4120
<b>T01130404</b>	Omni 2 Dipoles VHF 2 inputs, Harsh Environmental Sites, high Isol	2	108-156	2	40	500	83	6140
<b>E01120601</b>	Omni 2 Dipoles UHF 2 inputs,	2	225-400	1	27	500	23	3000
<b>T01120601</b>	Omni 2 Dipoles UHF 2 inputs	2	225-400	2	27	200	23	2424
<b>T01120623</b>	Omni 2 Dipoles UHF 2 inputs, High Contrast Color	2	225-400	2	27	200	23	2425
<b>T01120624</b>	Omni 2 Dipoles UHF 2 inputs, High Contrast Color, Obstruction Light	2	225-400	2	27	200	26	2810
<b>T01120446</b>	Omni 2 Dipoles VHF 2 inputs , Harsh Environmental Sites, De-icing	2	108-156	2	27	200	89	4668
<b>T01120458</b>	Omni 2 Dipoles VHF 2 inputs , green	2	108-156	2	27	200	31	4119
<b>T01120615</b>	Omni 2 Dipoles UHF 2 inputs , Harsh Environmental Sites , De-icing	2	225-400	2	27	200	86	3100
<b>T01130401</b>	Omni 3 Dipoles VHF,3 inputs	3	108-156	2	27	200	40	6000
<b>E01130401</b>	Omni 3 Dipoles VHF 3 inputs	3	118-137	2	30	500	40	7000
<b>T01130409</b>	Omni 3 Dipoles VHF 3 inputs , Harsh Environmental Sites	3	108-156	2	27	500	83	6140
<b>T01130410</b>	Omni 3 Dipoles VHF 3 inputs , Harsh Environmental Sites , De-icing	3	108-156	2	27	200	102	6955
<b>T01130601</b>	Omni 3 Dipoles UHF 3 inputs	3	225-400	2	27	200	30	3530
<b>T01130416</b>	Omni 3 Dipoles VHF 3 inputs High Contrast Color, Obstruction Light	3	108-156	2	27	200	41	7250
<b>T01130611</b>	Omni 3 Dipoles UHF 3 inputs High Contrast Color, Obstruction Light	3	225-400	2	27	200	127	4850



# OMNIDIRECTIONAL ANTENNAS VHF-UHF

ATC

POLOMARCONI.IT

POLOMARCONI offers a very wide range of wireless products.  
Our products can be tailored according to the customer's need.

Part Number ID	Description	Number of Dipoles	Frequency Range (MHz)	GAIN typical (dBi)	Isolation (dB)	Max Input Power (W) ≤	Weight (Kg) ≤	Height (mm)
<b>T01140406</b>	Omni 4 Dipoles VHF 1 input, Harsh Environmental Sites	4	108-156	7,5		200	96	8129
<b>T01140401</b>	Omni 4 Dipoles VHF 4 inputs, Harsh Environmental Sites	4	108-156	2	27	200	96	8126
<b>T01140606</b>	Omni 4 Dipoles UHF 1 input, Harsh Environmental Sites	4	225-400	5		200	80	4820
<b>T01140609</b>	Omni 4 Dipoles UHF 1 input	4	225-400	7,5		250	32	4070
<b>T01140618</b>	Omni 4 dipoles UHF 1 input, pole mounting	4	225-400	5		200	10	2980
<b>T01140608</b>	Omni 4 Dipoles UHF 2 inputs	4	225-400	4,5	27	200	36	5380
<b>T01140604</b>	Omni 4 Dipoles UHF 4 inputs, Harsh Environmental Sites	4	225-400	2	27	200	80	4820
<b>T01140607</b>	Omni 4 Dipoles UHF 4 inputs	4	225-400	2	27	200	32	4809
<b>T01140613</b>	Omni 4 Dipoles UHF 4 inputs , Harsh Environmental Sites, De-icing	4	225-400	7,5	27	200	91	5183
<b>T01150601</b>	Omni 5 Dipoles UHF 5 Inputs Harsh Environmental Sites, De-icing	5	225-400	2	27	200	100	6288
<b>T01160604</b>	Omni 6 Dipoles UHF 3 inputs, Harsh Environmental Sites	6	225-400	4,5	27	200	95	7130
<b>T01160601</b>	Omni 6 Dipoles UHF 6 inputs, Harsh Environmental Sites	6	225-400	2	27	200	95	7130
<b>T01163001</b>	Omni 6 Dipoles VHF-UHF, 6 inputs	6	118-137/225-400	2	27	500	100	10200
<b>T01160605</b>	Omni 6 Dipoles UHF, 1 input, Harsh Environmental Sites	6	225-400	9		200	95	7130
<b>T01121601</b>	Omni 2 Dipoles VHF/UHF 2 inputs	2	108-156/225-400	2	27	200	26	3219
<b>E01121601</b>	Omni 2 Dipoles VHF/UHF 2 inputs	2	118-137/225-400	2	30	500	26	3219
<b>T01123004</b>	Omni 2 Dipoles VHF-UHF, 2 inputs, Harsh Environmental Sites , De-icing	2	108-156/225-400	2	27	200	86	4000
<b>T01121603</b>	Omni 2 Dipoles VHF/UHF 1 input, pole mounitng	2	108-156/225-400	2		200	9,6	2400
<b>T01121608</b>	Omni 2 Dipoles VHF/UHF 2 inputs, High Contrast Color	2	108-156/225-400	2	27	200	26	3220
<b>T01123002</b>	Omni 2 DipolesVHF/UHF 2 inputs, High Contrast Color, Obstruction Light	2	108-156/225-400	2	27	200	29	3525
<b>T01143002</b>	Omni 2 Dipoles VHF/UHF 2 inputs, duplexed, Harsh Environmental Sites	2	108-156/225-400	0	40	200	95	7130
<b>T01133004</b>	Omni 3 Dipoles VHF/UHF/VHF 3 inputs, High Contrast Color, Obstruction light	3	108-156/225-400	2	27	200	41	5731
<b>T01131602</b>	Omni 3 Dipoles VHF/UHF/VHF 3 inputs	3	108-156/225-400	2	27	200	33	5333
<b>E01131602</b>	Omni 3 Dipoles VHF/UHF/VHF 3 inputs	3	118-137/225-400	2	30	500	33	5380
<b>T01131601</b>	Omni 3 Dipoles UHF/VHF/UHF 3 inputs	3	108-156/225-400	2	27	200	29	4317
<b>T01133003</b>	Omni 3 Dipoles UHF/VHF/UHF 3 inputs High Contrast Color, Obstruction light	3	108-156/225-400	2	27	200	36	4600
<b>T01133009</b>	Omni 3 Dipoles VHF/UHF/UHF 3 inputs, pole mounting	3	108-156/225-400	2	30	200	5,7	2900
<b>T01131608</b>	Omni 3 Dipoles V-U-V , 3 inputs ,Harsh Environmental Sites	3	108-156/225-400	2	27	200	81	5374
<b>T01133006</b>	Omni 3 Dipoles VHF-UHF-VHF, 3 inputs, Harsh Environmental Sites, De-icing	3	108-156/225-400	2	27	200	92	5135
<b>T01143011</b>	Omni 4 Dipoles V/V/U/UHF 4 inputs	4	108-156/225-400	2	27	200	40	6700

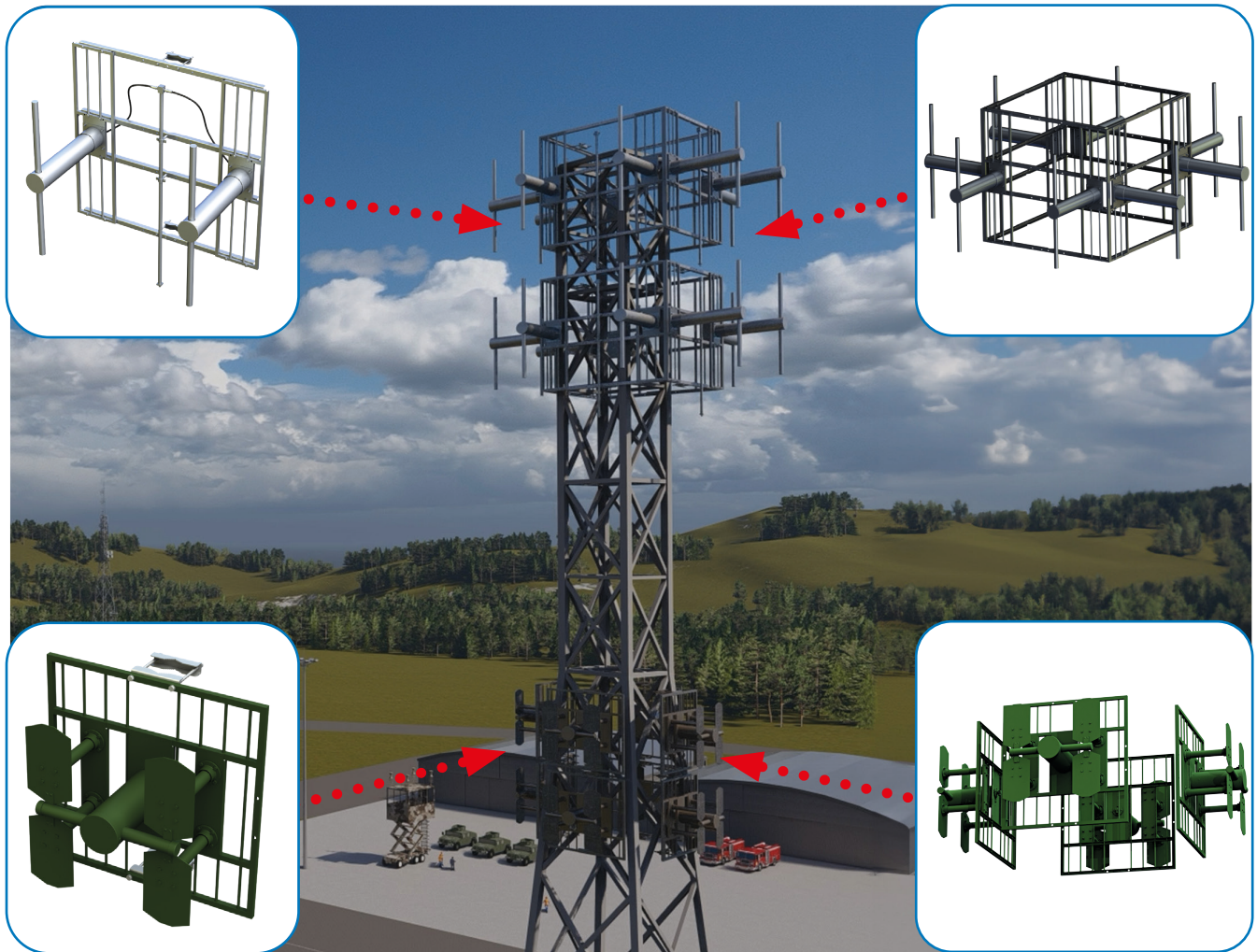


# DIRECTIVE PANEL ANTENNAS VHF-UHF & OMNI SYSTEMS

ATC

POLOMARCONI.IT

POLOMARCONI offers a very wide range of wireless products.  
Our products can be tailored according to the customer's need.





# DIRECTIVE PANEL ANTENNAS VHF-UHF & OMNI SYSTEMS

ATC

POLOMARCONI.IT

POLOMARCONI offers a very wide range of wireless products.  
Our products can be tailored according to the customer's need.

Part Number ID	Description	Number of Dipoles	Frequency Range (MHz)	GAIN typical (dBi)	Max Input Power (W) ≤	Weight (Kg) ≤	Height (mm)
<b>T02220401</b>	2 VHF Panel antennas module	2	117-144	2,2	500	30	1300
<b>T02230401</b>	VHF Panel Vertical Stacked	3	117-144	10	500	45	4450
<b>T02280601</b>	8 UHF Panel Antennas Module // olive green	8	225-400	5	500	138	1550
<b>T02283002</b>	VHF-UHF Wrap-around antenna system	8	108-174/225-400	2	100	600	4050
<b>T02240601</b>	4 UHF Panel Antennas Module	4	225-400	2	500	67	750
<b>T02340402</b>	4 VHF Panel Antennas Module	4	108-174	2	500	185	1250
<b>T02380402</b>	8 VHF Panel Antennas Module	8	108-174	6	500	365	2850
<b>T02380601</b>	8 UHF Panel Antennas Module // light grey	8	225-400	5	500	138	1550
<b>T01240605</b>	UHF Panel Antenna	2	225-400	10	200	16	750
<b>T01220403</b>	VHF Panel antenna	2	108-174	8	500	45	1250
<b>T01210403</b>	VHF Panel antenna	1	117-144	5	500	15	1250



# CAVITY FILTERS AND COMBINERS VHF-UHF

ATC

POLOMARCONI.IT

POLOMARCONI offers a very wide range of wireless products.  
Our products can be tailored according to the customer's need.





# BAND PASS CAVITY FILTERS VHF-UHF

ATC

POLOMARCONI.IT

POLOMARCONI offers a very wide range of wireless products.  
Our products can be tailored according to the customer's need.

Part Number ID	Description	Freq. (MHz)	Insertion Loss (dB)	Selectivity with 1 dB Insertion loss @ $f_0 \pm 0.5\% f_0$	Selectivity with 1 dB Insertion loss @ $f_0 \pm 1\% f_0$	Selectivity with 1 dB Insertion loss @ $f_0 \pm 2\% f_0$	Selectivity with 2 dB Insertion loss @ $f_0 \pm 0.5\% f_0$	Selectivity with 2 dB Insertion loss @ $f_0 \pm 1\% f_0$	Selectivity with 2 dB Insertion loss @ $f_0 \pm 2\% f_0$	Power (W)	Dimensions (mm)
T05120483	VHF Bandpass Iris Double Cavity filter 80mm	118-156	1 ÷ 4	≥11	≥22	≥33	≥24	≥36	≥44	100	2Ux19"x545
T05110432	VHF BandPass Cavity Filter 100mm	118-156	0.5 ÷ 2	≥11	≥17	≥23	≥17	≥23	≥29	100	3Ux19"x522
T05110436	VHF BandPass Cavity Filter 100mm front panel&tray	118-156	0.5 ÷ 2	≥11	≥17	≥23	≥17	≥23	≥29	100	3Ux19"x650
T05110418	VHF BandPass Cavity Filter 150mm	118-156	0.5 ÷ 2	≥14	≥20	≥26	≥20	≥26	≥32	200	3Ux19"x522
T05110426	VHF BandPass Cavity Filter 150mm front panel	118-156	0.5 ÷ 2	≥14	≥20	≥26	≥20	≥26	≥32	200	4Ux19"x550
T05110427	VHF BandPass Cavity Filter 150mm front panel&tray	118-156	0.5 ÷ 2	≥14	≥20	≥26	≥20	≥26	≥32	200	4Ux19"x550
T05110428	VHF BandPass Cavity Filter 210mm	118-156	0.5 ÷ 2	≥17	≥23	≥29	≥24	≥30	≥35	200	5Ux19"x592
T05110403	VHF BandPass Cavity Filter 210mm front panel&tray	118-156	0.5 ÷ 2	≥17	≥23	≥29	≥24	≥30	≥35	200	5Ux19"x650
T05120460	VHF Dual Single BandPass Filter 100mm front panel&tray	118-156	0.5 ÷ 2	≥11	≥17	≥23	≥17	≥23	≥29	100	3Ux19"x650
T05120426	VHF Dual Single BandPass Filter 150mm front panel&tray	118-156	0.5 ÷ 2	≥14	≥20	≥26	≥20	≥26	≥32	200	4Ux19"x550
T05110440	VHF Dual Single BandPass Filter 150mm front panel	118-156	0.5 ÷ 2	≥14	≥20	≥26	≥20	≥26	≥32	200	4Ux19"x550
T05110463	VHF BandPass single cavity filter 150mm front panel&tray	112-156	0.5 ÷ 2	≥14	≥20	≥26	≥20	≥26	≥32	200	4Ux19"x550
T05120453	VHF BandPass double cavity filter 150mm front panel&tray	112-156	1 ÷ 4				≥32	≥44	≥56	200	4Ux19"x550
T05120459	VHF Dual Single BandPass Filter 210mm front panel&tray +isolator	118-156	1.5 ÷ 3	≥17	≥23	≥29				100	5Ux19"x685
T05120467	VHF Dual Single BandPass Filter 210mm front panel&tray	118-156	0.5 ÷ 2	≥17	≥23	≥29	≥24	≥30	≥35	200	5Ux19"x650
T05120463	VHF Three Single BandPass Filter 100mm front panel&tray	118-156	0.5 ÷ 2	≥11	≥17	≥23	≥17	≥23	≥29	100	3Ux19"x650
T05120464	VHF Four Single BandPass Filter 100mm front panel&tray	118-156	0.5 ÷ 2	≥11	≥17	≥23	≥17	≥23	≥29	100	3Ux19"x650
T05120445	VHF Dual Cavity BandPass Filter 100mm front panel	118-156	1 ÷ 4				≥26	≥38	≥50	100	3Ux19"x650
T05120466	VHF Dual Cavity BandPass Filter 100mm front panel&tray	118-156	0.5 ÷ 2	≥11	≥17	≥23	≥26	≥38	≥50	100	3Ux19"x650
T05120427	VHF Dual Cavity BandPass Filter 150mm front panel	118-156	1 ÷ 4				≥32	≥44	≥56	200	4Ux19"x550
T05120442	VHF Dual Cavity BandPass Filter 150mm front panel&tray	118-156	1 ÷ 4				≥32	≥44	≥56	200	4Ux19"x550
T05120489	VHF Dual Cavity Bandpass Filter 210mm front panel&tray	118-156	1 ÷ 4	≥24	≥36	≥48	≥38	≥50	≥62	200	5Ux19"x645
T05120409	VHF Dual Cavity BandPass Filter 210mm iris + front panel&tray	118-156	0.5 ÷ 4				≥40	≥52	≥64	200	5Ux19"x685
T05140405	VHF n <sup>2</sup> Dual Cavity BandPass Filters 100mm front panel&tray	118-156	1 ÷ 4				≥26	≥38	≥50	100	3Ux19"x650
T05120678	UHF Bandpass Iris Double Cavity filter 80mm	225-400	1 ÷ 4	≥11	≥22	≥33	≥25	≥37	≥45	100	2Ux19"x553
T05110625	UHF BandPass Cavity Filter 100mm	225-400	0.5 ÷ 2	≥13	≥18	≥24	≥20	≥26	≥32	100	3Ux19"x522
T05110628	UHF BandPass Cavity Filter 100mm front panel&tray	225-400	0.5 ÷ 2	≥13	≥18	≥24	≥20	≥26	≥32	100	3Ux19"x550
T05110617	UHF BandPass Cavity Filter 150mm	225-400	0.5 ÷ 2	≥15	≥21	≥27	≥22	≥28	≥34	200	3Ux19"x522
T05110620	UHF BandPass Cavity Filter 150mm front panel	225-400	0.5 ÷ 2	≥15	≥21	≥27	≥22	≥28	≥34	200	4Ux19"x550
T05110619	UHF BandPass Cavity Filter 150mm front panel&tray	225-400	0.5 ÷ 2	≥15	≥21	≥27	≥22	≥28	≥34	200	4Ux19"x550
T05110621	UHF BandPass Cavity Filter 210mm	225-400	0.5 ÷ 2	≥18	≥25	≥31	≥24	≥30	≥36	200	5U19"x490
T05110621P	UHF BandPass Cavity Filter 210mm high Q	225-400	0.5 ÷ 2		≥27	≥33				200	5Ux19"x490
T05110635	UHF BandPass Cavity Filter 210mm front panel&tray	225-400	0.5 ÷ 2	≥18	≥25	≥31	≥24	≥30	≥36	200	5Ux19"x610
T05120661	UHF Dual Single BandPass Cavity Filter 100mm front panel&tray	225-400	0.5 ÷ 2	≥13	≥18	≥24	≥20	≥26	≥32	100	3Ux19"x650
T05120622	UHF Dual Single BandPass Cavity Filter 150mm front panel&tray	225-400	0.5 ÷ 2	≥15	≥21	≥27	≥22	≥28	≥34	200	4Ux19"x550
T05120640	UHF Dual Single BandPass Cavity Filter 210mm front panel&tray	225-400	0.5 ÷ 2	≥18	≥25	≥31	≥24	≥30	≥36	200	5Ux19"x560
T05120663	UHF Three Single BandPass Cavity Filter 100mm front panel&tray	225-400	0.5 ÷ 2	≥13	≥18	≥24	≥20	≥26	≥32	100	3Ux19"x650
T05120664	UHF Four Single BandPass Cavity Filter 100mm front panel&tray	225-400	0.5 ÷ 2	≥13	≥18	≥24	≥20	≥26	≥32	100	3Ux19"x650
T05120629	UHF Dual Cavity BandPass Filter 100mm front panel&tray	225-400	1 ÷ 3				≥26	≥38	≥52	100	3Ux19"x650
T05120638	UHF Dual Cavity BandPass Filter 150mm front panel	225-400	1 ÷ 3				≥32	≥45	≥60	200	4Ux19"x490
T05120621	UHF Dual Cavity BandPass Filter 150mm front panel&tray	225-400	1 ÷ 3				≥32	≥45	≥60	200	4Ux19"x522
T05120601	UHF Dual Cavity BandPass Filter 210mm front panel&tray	225-400	1 ÷ 3				≥40	≥52	≥67	200	5Ux19"x560



# NOTCH & PASS REJECT CAVITY FILTERS VHF-UHF

ATC

POLOMARCONI.IT

POLOMARCONI offers a very wide range of wireless products.  
Our products can be tailored according to the customer's need.

Part Number ID	Description	Frequency (MHz)	Insertion Loss (dB)	Rejection (dB)	Dimensions (mm)
<b>T05010406</b>	VHF double notch filter 80mm on tray	118-156	≤2	≥12@±100kHz ≥40@±200kHz ≥60@±500kHz	2Ux19"x650
<b>T05010406-2</b>	2X VHF double notch filter 80mm on tray	118-156	≤2	≥12@±100kHz ≥40@±200kHz ≥60@±500kHz	2Ux19"x650
<b>T05010408</b>	VHF Notch filter with Hybrid 210mm on tray	118-137	0.5 ÷ 2	≥25 ÷ 40 @ 50 ÷ 250 kHz	5Ux19"x680
<b>T05010605</b>	UHF Notch filter with hybrid 210mm on tray	225-400	0.5 ÷ 2.5	≥20 ÷ 40 @ 100÷250 kHz	5Ux19"x560
<b>T05110423</b>	VHF Pass-Reject Cavity Filter 210mm	118-156	≤ 1.5	≥20 @±200kHz ≥40@±500kHz	5U
<b>T05110424</b>	VHF Pass-Reject Single Cavity Filter 210mm on tray	118-156	≤ 1.5	≥20 @±200kHz ≥40@±500kHz	5Ux19"x645
<b>T05110422</b>	VHF Pass-Reject Dual Single Cavity Filter 210mm on tray	118-156	≤ 1.5	≥20 @±200kHz ≥40@±500kHz	5Ux19"x645



# AUTOMATIC CAVITY FILTERS VHF-UHF

ATC

POLOMARCONI.IT

POLOMARCONI offers a very wide range of wireless products.  
Our products can be tailored according to the customer's need.

Part Number ID	Description	Frequency Range (MHz)	Insertion Loss (dB)	Selectivity with 1 dB Insertion loss @ $f_0 \pm 0.5\%f_0$	Selectivity with 1 dB Insertion loss @ $f_0 \pm 1\%f_0$	Selectivity with 2 dB Insertion loss @ $f_0 \pm 0.5\%f_0$	Selectivity with 2 dB Insertion loss @ $f_0 \pm 1\%f_0$	Power handling (W)	Remote control interface	Tuning time (S) $\leq$	Power Supply	Height Unit	Width	Depth (mm)
T05110438	VHF Automatic Single Cavity Filter 150mm	118-156	$\leq 1.3$	$\geq 11.5$	$\geq 17.5$			200	RS485	22	AC&DC	4	19"	600
T05110434	VHF Automatic Single Cavity Filter 210mm	118-156	$\leq 1.2$	$\geq 16$	$\geq 21$			200	RS485	27	AC&DC	5	19"	685
T05120444	VHF Automatic Dual Cavity Filter 150mm	118-156	$\leq 2.3$			$\geq 25$	$\geq 37$	200	RS485	27	AC&DC	4	19"	610
T05120452	VHF Automatic Dual Cavity Filter 210mm	118-156	$\leq 2.3$			$\geq 36$	$\geq 48$	200	RS485	27	AC&DC	5	19"	686
T05110630	UHF Automatic Single Cavity Filter 150mm	225-400	$\leq 1.3$	$\geq 16$	$\geq 22$			200	RS485	27	AC&DC	4	19"	610
T05110626	UHF Automatic Single Cavity Filter 210mm	225-400	$\leq 1.3$	$\geq 17$	$\geq 23$			200	RS485	25	AC&DC	5	19"	500
T05120628	UHF Automatic Dual Cavity Filter 150mm	225-400	$\leq 2.3$			$\geq 33$	$\geq 45$	200	RS485	25	AC&DC	4	19"	610
T05120635	UHF Automatic Dual Cavity Filter 210mm	225-400	$\leq 2.3$			$\geq 39.5$	$\geq 51.5$	200	RS485	27	AC&DC	5	19"	500
T05120485	VHF Automatic Dual Cavity Filter 150mm	118-156	$\leq 2.3$			$\geq 25$	$\geq 37$	200	RS422	27	AC&DC	4	19"	610
T05120440	VHF Automatic Dual Cavity Filter 210mm	118-156	$\leq 2.0$			$\geq 36$		200	RS422	22	AC&DC	7	19"	610
T05120437	VHF Automatic Dual Single Cavity Filter 210mm	118-156	$\leq 1$	$\geq 15$	$\geq 20$			200	RS422	26	AC&DC	7	19"	620
T05110433	VHF Automatic Single Cavity Filter 210mm	118-156	$\leq 1$	$\geq 15$	$\geq 20$			200	RS422	24	AC&DC	5	19"	610
T05110618	UHF Automatic Single Cavity Filter 210mm	225-400	$\leq 1.3$	$\geq 16$	$\geq 22$			200	RS422	27	AC&DC	5	19"	550
T05113003	VHF-UHF independent automatic filters 210mm	118-156 / 225-400	$\leq 1.3$	$\geq 15$	$\geq 20$			200	RS422	27	AC&DC	7	19"	620
T05120626	UHF Automatic Dual Cavity Filter 210mm	225-400	$\leq 2.3$			$\geq 39.5$	$\geq 51.5$	200	RS422	27	AC&DC	7	19"	550



# AUTOMATIC DOUBLE BRIDGE COMBINERS VHF-UHF

ATC

POLOMARCONI.IT

POLOMARCONI offers a very wide range of wireless products. Our products can be tailored according to the customer's need.

Part Number ID	Description	Frequency (MHz)	Insertion Loss (dB)	Filter Selectivity with 1 dB Insertion loss @ $f_0 \pm 0.5\% f_0$	Filter Selectivity with 1 dB Insertion loss @ $f_0 \pm 1\% f_0$	Isolation @ channel spacing $f_0 \pm 0.5\% f_0$	Isolation @ channel spacing $f_0 \pm 1\% f_0$	Remote control interface	Tuning time $f_{min}$ - $f_{max}$ (s)	Power handling (W)	Power supply	Height Unit 19"
<b>J06170422</b>	2 Channels VHF automatic double bridge Combiner 210mm (SNMP)	118-156	$\leq 1.8$	$\geq 15$	$\geq 20.5$	$\geq 40$		RS 485 /SNMP	$\leq 27$	200	AC&DC	12
<b>J06180401</b>	3 Channels VHF automatic double bridge Combiner 210mm (SNMP)	118-156	$\leq 2.1$	$\geq 15$	$\geq 20.5$	$\geq 40$		RS 485 /SNMP	$\leq 27$	200	AC&DC	19
<b>J06190401</b>	4 Channels VHF automatic double bridge Combiner 210mm (SNMP)	118-156	$\leq 2.3$	$\geq 15$	$\geq 20.5$	$\geq 40$		RS 485 /SNMP	$\leq 27$	200	AC&DC	24
<b>J06200401</b>	5 Channels VHF automatic double bridge Combiner 210mm (SNMP)	118-156	$\leq 2.7$	$\geq 15$	$\geq 20.5$	$\geq 40$		RS 485 /SNMP	$\leq 27$	200	AC&DC	31
<b>J06170620</b>	2 Channels UHF automatic double bridge Combiner 210mm (SNMP)	225-400	$\leq 1.8$	$\geq 18$	$\geq 24$		$\geq 38$	RS 485 /SNMP	$\leq 27$	200	AC&DC	12
<b>J06180601</b>	3 Channels UHF automatic double bridge Combiner 210mm (SNMP)	225-400	$\leq 2.1$	$\geq 18$	$\geq 24$		$\geq 38$	RS 485 /SNMP	$\leq 27$	200	AC&DC	19
<b>J06190601</b>	4 Channels UHF automatic double bridge Combiner 210mm (SNMP)	225-400	$\leq 2.3$	$\geq 18$	$\geq 24$		$\geq 38$	RS 485 /SNMP	$\leq 27$	200	AC&DC	24
<b>J06200601</b>	5 Channels UHF automatic double bridge Combiner 210mm (SNMP)	225-400	$\leq 2.7$	$\geq 18$	$\geq 24$		$\geq 38$	RS 485 /SNMP	$\leq 27$	200	AC&DC	31
<b>T06170418</b>	2 Channels VHF Single Automatic double bridge combiner 210mm (1 Channel single cavity)	118-156	$\leq 1.8$	$\geq 15$	$\geq 20$	$\geq 40$		RS422	$\leq 27$	200	AC&DC	12
<b>T06180416</b>	3 Channels VHF Single Automatic double bridge combiner 210mm (1 Channel single cavity)	118-156	$\leq 2.0$	$\geq 15$	$\geq 20$	$\geq 40$		RS422	$\leq 27$	200	AC&DC	17
<b>T06190411</b>	4 Channels VHF Single Automatic double bridge combiner 210mm (1 Channel single cavity)	118-156	$\leq 2.2$	$\geq 15$	$\geq 20$	$\geq 40$		RS422	$\leq 27$	200	AC&DC	24
<b>T06170609</b>	2 Channels UHF Single Automatic double bridge combiner 210mm (1 Channel single cavity)	225-400	$\leq 2.0$				$\geq 38$	RS422	$\leq 27$	200	AC&DC	12
<b>T061806XX</b>	3 Channels UHF Single Automatic double bridge combiner 210mm (1 Channel single cavity)	225-400	$\leq 2.3$				$\geq 38$	RS422	$\leq 27$	200	AC&DC	17
<b>T06190618</b>	4 Channels UHF Single Automatic double bridge combiner 210mm (1 Channel single cavity)	225-400	$\leq 2.6$				$\geq 38$	RS422	$\leq 27$	200	AC&DC	24
<b>T06170427</b>	2 Channels VHF Single Automatic double bridge Combiner 210mm	118-156	$\leq 1.8$			$\geq 40$		RS422	$\leq 27$	200	AC&DC	12
<b>T06180421</b>	3 Channels VHF Single Automatic double bridge Combiner 210mm	118-156	$\leq 2.0$			$\geq 40$		RS422	$\leq 27$	200	AC&DC	19
<b>T06190426</b>	4 Channels VHF Single Automatic Cavity double bridge Combiner 210mm	118-156	$\leq 2.2$			$\geq 40$		RS422	$\leq 27$	200	AC&DC	24
<b>T06170628</b>	2 Channels UHF Single Automatic Cavity double bridge Combiner 210mm	225-400	$\leq 1.8$				$\geq 38$	RS422	$\leq 27$	200	AC&DC	12
<b>T06180610</b>	3 Channels UHF Single Automatic Cavity double bridge Combiner 210mm	225-400	$\leq 2.3$				$\geq 38$	RS422	$\leq 27$	200	AC&DC	19
<b>T06190628</b>	4 Channels UHF Single Automatic Cavity double bridge Combiner 210mm	225-400	$\leq 2.6$				$\geq 38$	RS422	$\leq 27$	200	AC&DC	24

Up to 12 channels available for all configurations.



# STARPOINT COMBINERS 80mm VHF-UHF

ATC

POLOMARCONI.IT

POLOMARCONI offers a very wide range of wireless products.  
Our products can be tailored according to the customer's need.

Part Number ID	Description	Frequency (MHz)	Insertion Loss (dB)	Selectivity with 2 dB Insertion loss @ $f_0 \pm 0.5\%f_0$	Selectivity with 2 dB Insertion loss @ $f_0 \pm 1\%f_0$	Selectivity with 2 dB Insertion loss @ $f_0 \pm 2\%f_0$	Isolation @ channel spacing $f_0 \pm 0.5\%f_0$ with 2dB insertion loss	Isolation @ channel spacing $f_0 \pm 1\%f_0$ with 2dB insertion loss	Isolation @ channel spacing $f_0 \pm 2\%f_0$ with 2dB insertion loss	Height Unit	Width	Depth (mm)
<b>T06090432</b>	2 Channels VHF RX Double Cavity 80mm	118-156	$\leq 2.5$	$\geq 25$	$\geq 35$	$\geq 44$	$\geq 26$	$\geq 36$	$\geq 45$	2	19"	650
<b>T06100439</b>	3 Channels VHF RX Double Cavity 80mm	118-156	$\leq 2.5$	$\geq 25$	$\geq 35$	$\geq 44$	$\geq 26$	$\geq 36$	$\geq 45$	4	19"	650
<b>T06110437</b>	4 Channels VHF RX Double Cavity 80mm	118-156	$\leq 2.5$	$\geq 25$	$\geq 35$	$\geq 44$	$\geq 26$	$\geq 36$	$\geq 45$	4	19"	650
<b>T061204121</b>	5 Channels VHF RX Double Cavity 80mm	118-156	$\leq 3$	$\geq 25$	$\geq 35$	$\geq 44$	$\geq 26$	$\geq 36$	$\geq 45$	6	19"	650
<b>T060906XX</b>	2 Channels UHF RX Double Cavity 80mm	225-400	$\leq 2.5$	$\geq 30$	$\geq 42$	$\geq 52$	$\geq 31$	$\geq 43$	$\geq 46$	2	19"	650
<b>T061006XX</b>	3 Channels UHF RX Double Cavity 80mm	225-400	$\leq 2.5$	$\geq 30$	$\geq 42$	$\geq 52$	$\geq 31$	$\geq 43$	$\geq 46$	4	19"	650
<b>T06110620</b>	4 Channels UHF RX Double Cavity 80mm	225-400	$\leq 2.5$	$\geq 30$	$\geq 42$	$\geq 52$	$\geq 31$	$\geq 43$	$\geq 46$	4	19"	650
<b>T061206XX</b>	5 Channels UHF RX Double Cavity 80mm	225-400	$\leq 3$	$\geq 30$	$\geq 42$	$\geq 52$	$\geq 31$	$\geq 43$	$\geq 46$	6	19"	650

Up to 12 channels available for all configurations.



# STARPOINT COMBINERS 108mm VHF-UHF

ATC

POLOMARCONI.IT

POLOMARCONI offers a very wide range of wireless products. Our products can be tailored according to the customer's need.

Part Number ID	Description	Frequency (MHz)	Insertion Loss (dB)	Selectivity with 1 dB Insertion loss @ $f_0 \pm 0.5\% f_0$	Selectivity with 1 dB Insertion loss @ $f_0 \pm 1\% f_0$	Selectivity with 1 dB Insertion loss @ $f_0 \pm 2\% f_0$	Isolation @ channel spacing $f_0 \pm 0.5\% f_0$ with 1dB insertion loss	Isolation @ channel spacing $f_0 \pm 1\% f_0$ with 1dB insertion loss	Isolation @ channel spacing $f_0 \pm 2\% f_0$ with 1dB insertion loss	Height Unit	Width	Depth (mm)
T06090417	2 CHANNELS VHF RX SINGLE CAVITY 100mm	118-156	≤1.5	≥11	≥17	≥23	≥12	≥18	≥24	3	19"	650
T06100415	3 CHANNELS VHF RX SINGLE CAVITY 100mm	118-156	≤1.5	≥11	≥17	≥23	≥12	≥18	≥24	3	19"	650
T06110422	4 CHANNELS VHF RX SINGLE CAVITY 100mm	118-156	≤1.5	≥11	≥17	≥23	≥12	≥18	≥24	3	19"	650
T06120491	5 CHANNELS VHF RX SINGLE CAVITY 100mm	118-156	≤2	≥11	≥17	≥23	≥12	≥18	≥24	6	19"	650
T06090420	2 CHANNELS VHF TX SINGLE CAVITY 100mm	118-156	≤2	≥11	≥17	≥23	≥27	≥33	≥39	4	19"	650
T06100416	3 CHANNELS VHF TX SINGLE CAVITY 100mm	118-156	≤2	≥11	≥17	≥23	≥27	≥33	≥39	4	19"	650
T06110418	4 CHANNELS VHF TX SINGLE CAVITY 100mm	118-156	≤2	≥11	≥17	≥23	≥27	≥33	≥39	4	19"	650
T06120492	5 CHANNELS VHF TX SINGLE CAVITY 100mm	118-156	≤2.5	≥11	≥17	≥23	≥27	≥33	≥39	8	19"	650
T06090610	2 CHANNELS UHF RX SINGLE CAVITY 100mm	225-400	≤1.5	≥13	≥18	≥24	≥14	≥19	≥25	3	19"	650
T06100612	3 CHANNELS UHF RX SINGLE CAVITY 100mm	225-400	≤1.5	≥13	≥18	≥24	≥14	≥19	≥25	3	19"	650
T06110616	4 CHANNELS UHF RX SINGLE CAVITY 100mm	225-400	≤2	≥13	≥18	≥24	≥14	≥19	≥25	3	19"	650
T06120672	5 CHANNELS UHF RX SINGLE CAVITY 100mm	225-400	≤2	≥13	≥18	≥24	≥14	≥19	≥25	6	19"	650
T06090611	2 CHANNELS UHF TX SINGLE CAVITY 100mm	225-400	≤2	≥13	≥18	≥24	≥29	≥34	≥40	4	19"	650
T06100611	3 CHANNELS UHF TX SINGLE CAVITY 100mm	225-400	≤2	≥13	≥18	≥24	≥29	≥34	≥40	4	19"	650
T06110615	4 CHANNELS UHF TX SINGLE CAVITY 100mm	225-400	≤2	≥13	≥18	≥24	≥29	≥34	≥40	4	19"	650
T06120674	5 CHANNELS UHF TX SINGLE CAVITY 100mm	225-400	≤2.5	≥13	≥18	≥24	≥29	≥34	≥40	8	19"	650
T06090427	2 CHANNELS VHF RX DOUBLE CAVITY 100mm	118-156	≤2.5	≥26	≥38	≥50	≥27	≥39	≥51	3	19"	650
T06100427	3 CHANNELS VHF RX DOUBLE CAVITY 100mm	118-156	≤2.5	≥26	≥38	≥50	≥27	≥39	≥51	6	19"	650
T06110433	4 CHANNELS VHF RX DOUBLE CAVITY 100mm	118-156	≤2.5	≥26	≥38	≥50	≥27	≥39	≥51	6	19"	650
T06120493	5 CHANNELS VHF RX DOUBLE CAVITY 100mm	118-156	≤3	≥26	≥38	≥50	≥27	≥39	≥51	9	19"	650
T060904XX	2 CHANNELS VHF TX DOUBLE CAVITY 100mm	118-156	≤3	≥26	≥38	≥50	≥42	≥54	≥66	4	19"	650
T061004XX	3 CHANNELS VHF TX DOUBLE CAVITY 100mm	118-156	≤3	≥26	≥38	≥50	≥42	≥54	≥66	8	19"	650
T061104XX	4 CHANNELS VHF TX DOUBLE CAVITY 100mm	118-156	≤3	≥26	≥38	≥50	≥42	≥54	≥66	8	19"	650
T061204XX	5 CHANNELS VHF TX DOUBLE CAVITY 100mm	118-156	≤3.5	≥26	≥38	≥50	≥42	≥54	≥66	12	19"	650
T060906XX	2 CHANNELS UHF RX DOUBLE CAVITY 100mm	225-400	≤2.5	≥26	≥38	≥52	≥27	≥39	≥53	3	19"	650
T061006XX	3 CHANNELS UHF RX DOUBLE CAVITY 100mm	225-400	≤2.5	≥26	≥38	≥52	≥27	≥39	≥53	6	19"	650
T06110619	4 CHANNELS UHF RX DOUBLE CAVITY 100mm	225-400	≤2.5	≥26	≥38	≥52	≥27	≥39	≥53	6	19"	650
T061206XX	5 CHANNELS UHF RX DOUBLE CAVITY 100mm	225-400	≤3	≥26	≥38	≥52	≥27	≥39	≥53	9	19"	650
T060906XX	2 CHANNELS UHF TX DOUBLE CAVITY 100mm	225-400	≤3	≥26	≥38	≥52	≥42	≥54	≥68	4	19"	650
T061006XX	3 CHANNELS UHF TX DOUBLE CAVITY 100mm	225-400	≤3	≥26	≥38	≥52	≥42	≥54	≥68	8	19"	650
T061106XX	4 CHANNELS UHF TX DOUBLE CAVITY 100mm	225-400	≤3	≥26	≥38	≥52	≥42	≥54	≥68	8	19"	650
T061206XX	5 CHANNELS UHF TX DOUBLE CAVITY 100mm	225-400	≤3.5	≥26	≥38	≥52	≥42	≥54	≥68	12	19"	650

Up to 12 channels available for all configurations.



# STARPOINT COMBINERS 150mm VHF-UHF

ATC

POLOMARCONI.IT

POLOMARCONI offers a very wide range of wireless products. Our products can be tailored according to the customer's need.

Part Number ID	Description	Frequency (MHz)	Insertion Loss (dB)	Selectivity with 1 dB Insertion loss @ $f_0 \pm 0.5\%f_0$	Selectivity with 1 dB Insertion loss @ $f_0 \pm 1\%f_0$	Selectivity with 1 dB Insertion loss @ $f_0 \pm 2\%f_0$	Isolation @ channel spacing $f_0 \pm 0.5\%f_0$ with 1dB insertion loss	Isolation @ channel spacing $f_0 \pm 1\%f_0$ with 1dB insertion loss	Isolation @ channel spacing $f_0 \pm 2\%f_0$ with 1dB insertion loss	Height Unit	Width	Depth (mm)
<b>T06090405</b>	2 CHANNELS VHF RX SINGLE CAVITY 150mm	118-156	≤1.5	≥14	≥20	≥26	≥15	≥21	≥27	4	19"	550
<b>T06100406</b>	3 CHANNELS VHF RX SINGLE CAVITY 150mm	118-156	≤1.5	≥14	≥20	≥26	≥15	≥21	≥27	8	19"	550
<b>T06110407</b>	4 CHANNELS VHF RX SINGLE CAVITY 150mm	118-156	≤1.5	≥14	≥20	≥26	≥15	≥21	≥27	8	19"	550
<b>T06120422</b>	5 CHANNELS VHF RX SINGLE CAVITY 150mm	118-156	≤2	≥14	≥20	≥26	≥15	≥21	≥27	12	19"	550
<b>T06090411</b>	2 CHANNELS VHF TX SINGLE CAVITY 150mm	118-156	≤2	≥14	≥20	≥26	≥30	≥36	≥42	4	19"	550
<b>T06100409</b>	3 CHANNELS VHF TX SINGLE CAVITY 150mm	118-156	≤2	≥14	≥20	≥26	≥30	≥36	≥42	8	19"	550
<b>T06110409</b>	4 CHANNELS VHF TX SINGLE CAVITY 150mm	118-156	≤2	≥14	≥20	≥26	≥30	≥36	≥42	8	19"	550
<b>T06120429</b>	5 CHANNELS VHF TX SINGLE CAVITY 150mm	118-156	≤2.5	≥14	≥20	≥26	≥30	≥36	≥42	12	19"	550
<b>T06090603</b>	2 CHANNELS UHF RX SINGLE CAVITY 150mm	225-400	≤1.5	≥15	≥21	≥27	≥16	≥22	≥28	4	19"	485
<b>T06100604</b>	3 CHANNELS UHF RX SINGLE CAVITY 150mm	225-400	≤1.5	≥15	≥21	≥27	≥16	≥22	≥28	8	19"	485
<b>T06110601</b>	4 CHANNELS UHF RX SINGLE CAVITY 150mm	225-400	≤1.5	≥15	≥21	≥27	≥16	≥22	≥28	8	19"	485
<b>T06120622</b>	5 CHANNELS UHF RX SINGLE CAVITY 150mm	225-400	≤2	≥15	≥21	≥27	≥16	≥22	≥28	12	19"	485
<b>T06090604</b>	2 CHANNELS UHF TX SINGLE CAVITY 150mm	225-400	≤2	≥15	≥21	≥27	≥31	≥37	≥43	4	19"	485
<b>T06100605</b>	3 CHANNELS UHF TX SINGLE CAVITY 150mm	225-400	≤2	≥15	≥21	≥27	≥31	≥37	≥43	8	19"	485
<b>T06110602</b>	4 CHANNELS UHF TX SINGLE CAVITY 150mm	225-400	≤2	≥15	≥21	≥27	≥31	≥37	≥43	8	19"	485
<b>T06120630</b>	5 CHANNELS UHF TX SINGLE CAVITY 150mm	225-400	≤2.5	≥15	≥21	≥27	≥31	≥37	≥43	12	19"	485
Part Number ID	Description	Frequency (MHz)	Insertion Loss (dB)	Selectivity with 2 dB Insertion loss @ $f_0 \pm 0.5\%f_0$	Selectivity with 2 dB Insertion loss @ $f_0 \pm 1\%f_0$	Selectivity with 2 dB Insertion loss @ $f_0 \pm 2\%f_0$	Isolation @ channel spacing $f_0 \pm 0.5\%f_0$ with 2dB insertion loss	Isolation @ channel spacing $f_0 \pm 1\%f_0$ with 2dB insertion loss	Isolation @ channel spacing $f_0 \pm 2\%f_0$ with 2dB insertion loss	Height Unit	Width	Depth (mm)
<b>T06090409</b>	2 CHANNELS VHF RX DOUBLE CAVITY 150mm	118-156	≤2.5	≥32	≥44	≥56	≥33	≥45	≥57	8	19"	550
<b>T06100407</b>	3 CHANNELS VHF RX DOUBLE CAVITY 150mm	118-156	≤2.5	≥32	≥44	≥56	≥33	≥45	≥57	12	19"	550
<b>T06110405</b>	4 CHANNELS VHF RX DOUBLE CAVITY 150mm	118-156	≤2.5	≥32	≥44	≥56	≥33	≥45	≥57	16	19"	550
<b>T06120407</b>	5 CHANNELS VHF RX DOUBLE CAVITY 150mm	118-156	≤3	≥32	≥44	≥56	≥33	≥45	≥57	20	19"	550
<b>T06090410</b>	2 CHANNELS VHF TX DOUBLE CAVITY 150mm	118-156	≤3	≥32	≥44	≥56	≥48	≥60	≥73	8	19"	550
<b>T06100411</b>	3 CHANNELS VHF TX DOUBLE CAVITY 150mm	118-156	≤3	≥32	≥44	≥56	≥48	≥60	≥73	12	19"	550
<b>T06110411</b>	4 CHANNELS VHF TX DOUBLE CAVITY 150mm	118-156	≤3	≥32	≥44	≥56	≥48	≥60	≥73	16	19"	550
<b>T06120414</b>	5 CHANNELS VHF TX DOUBLE CAVITY 150mm	118-156	≤3.5	≥32	≥44	≥56	≥48	≥60	≥73	20	19"	550
<b>T06090601</b>	2 CHANNELS UHF RX DOUBLE CAVITY 150mm	225-400	≤2.5	≥32	≥45	≥60	≥33	≥46	≥61	8	19"	485
<b>T06100602</b>	3 CHANNELS UHF RX DOUBLE CAVITY 150mm	225-400	≤2.5	≥32	≥45	≥60	≥33	≥46	≥61	12	19"	485
<b>T06110604</b>	4 CHANNELS UHF RX DOUBLE CAVITY 150mm	225-400	≤3	≥32	≥45	≥60	≥33	≥46	≥61	16	19"	485
<b>T06120606</b>	5 CHANNELS UHF RX DOUBLE CAVITY 150mm	225-400	≤3	≥32	≥45	≥60	≥33	≥46	≥61	20	19"	485
<b>T06090602</b>	2 CHANNELS UHF TX DOUBLE CAVITY 150mm	225-400	≤3	≥32	≥45	≥60	≥48	≥61	≥76	8	19"	485
<b>T06100603</b>	3 CHANNELS UHF TX DOUBLE CAVITY 150mm	225-400	≤3	≥32	≥45	≥60	≥48	≥61	≥76	12	19"	485
<b>T06110605</b>	4 CHANNELS UHF TX DOUBLE CAVITY 150mm	225-400	≤3.5	≥32	≥45	≥60	≥48	≥61	≥76	16	19"	485
<b>T06120614</b>	5 CHANNELS UHF TX DOUBLE CAVITY 150mm	225-400	≤3.5	≥32	≥45	≥60	≥48	≥61	≥76	20	19"	485

Up to 12 channels available for all configurations.



# STARPOINT COMBINERS 210mm VHF-UHF

ATC

POLOMARCONI.IT

POLOMARCONI offers a very wide range of wireless products. Our products can be tailored according to the customer's need.

Part Number ID	Description	Frequency (MHz)	Insertion Loss (dB)	Selectivity with 1 dB Insertion loss @ $f_0 \pm 0.5\%f_0$	Selectivity with 1 dB Insertion loss @ $f_0 \pm 1\%f_0$	Selectivity with 1 dB Insertion loss @ $f_0 \pm 2\%f_0$	Isolation @ channel spacing $f_0 \pm 0.5\%f_0$ with 1dB insertion loss	Isolation @ channel spacing $f_0 \pm 1\%f_0$ with 1dB insertion loss	Isolation @ channel spacing $f_0 \pm 2\%f_0$ with 1dB insertion loss	Height Unit	Width	Depth (mm)
T06090401	2 CHANNELS VHF RX SINGLE CAVITY 210mm	118-156	≤1.5	≥17	≥23	≥29	≥18	≥24	≥30	5	19"	650
T06100413	3 CHANNELS VHF RX SINGLE CAVITY 210mm	118-156	≤1.5	≥17	≥23	≥29	≥18	≥24	≥30	10	19"	650
T06110401	4 CHANNELS VHF RX SINGLE CAVITY 210mm	118-156	≤1.5	≥17	≥23	≥29	≥18	≥24	≥30	10	19"	650
T06120436	5 CHANNELS VHF RX SINGLE CAVITY 210mm	118-156	≤2	≥17	≥23	≥29	≥18	≥24	≥30	15	19"	687
T06090414	2 CHANNELS VHF TX SINGLE CAVITY 210mm	118-156	≤2	≥17	≥23	≥29	≥33	≥39	≥45	5	19"	685
T06100403	3 CHANNELS VHF TX SINGLE CAVITY 210mm	118-156	≤2	≥17	≥23	≥29	≥33	≥39	≥45	10	19"	685
T06110417	4 CHANNELS VHF TX SINGLE CAVITY 210mm	118-156	≤2	≥17	≥23	≥29	≥33	≥39	≥45	10	19"	685
T06120437	5 CHANNELS VHF TX SINGLE CAVITY 210mm	118-156	≤2.5	≥17	≥23	≥29	≥33	≥39	≥45	15	19"	685
T06090608	2 CHANNELS UHF RX SINGLE CAVITY 210mm	225-400	≤1.5	≥18	≥25	≥31	≥19	≥26	≥32	5	19"	560
T06100608	3 CHANNELS UHF RX SINGLE CAVITY 210mm	225-400	≤1.5	≥18	≥25	≥31	≥19	≥26	≥32	10	19"	560
T06110608	4 CHANNELS UHF RX SINGLE CAVITY 210mm	225-400	≤2	≥18	≥25	≥31	≥19	≥26	≥32	10	19"	560
T06120642	5 CHANNELS UHF RX SINGLE CAVITY 210mm	225-400	≤2	≥18	≥25	≥31	≥19	≥26	≥32	15	19"	560
T06090609	2 CHANNELS UHF TX SINGLE CAVITY 210mm	225-400	≤2	≥18	≥25	≥31	≥34	≥41	≥47	5	19"	560
T06100609	3 CHANNELS UHF TX SINGLE CAVITY 210mm	225-400	≤2	≥18	≥25	≥31	≥34	≥41	≥47	10	19"	560
T06110609	4 CHANNELS UHF TX SINGLE CAVITY 210mm	225-400	≤2	≥18	≥25	≥31	≥34	≥41	≥47	10	19"	560
T06120643	5 CHANNELS UHF TX SINGLE CAVITY 210mm	225-400	≤2.5	≥18	≥25	≥31	≥34	≥41	≥47	15	19"	560
Part Number ID	Description	Frequency (MHz)	Insertion Loss (dB)	Selectivity with 2 dB Insertion loss @ $f_0 \pm 0.5\%f_0$	Selectivity with 2 dB Insertion loss @ $f_0 \pm 1\%f_0$	Selectivity with 2 dB Insertion loss @ $f_0 \pm 2\%f_0$	Isolation @ channel spacing $f_0 \pm 0.5\%f_0$ with 2dB insertion loss	Isolation @ channel spacing $f_0 \pm 1\%f_0$ with 2dB insertion loss	Isolation @ channel spacing $f_0 \pm 2\%f_0$ with 2dB insertion loss	Height Unit	Width	Depth (mm)
T06090402	2 CHANNELS VHF RX DOUBLE CAVITY 210mm	118-156	≤2.5	≥38	≥50	≥62	≥39	≥51	≥63	10	19"	685
T06100402	3 CHANNELS VHF RX DOUBLE CAVITY 210mm	118-156	≤2.5	≥38	≥50	≥62	≥39	≥51	≥63	15	19"	685
T06110402	4 CHANNELS VHF RX DOUBLE CAVITY 210mm	118-156	≤2.5	≥38	≥50	≥62	≥39	≥51	≥63	20	19"	685
T06120438	5 CHANNELS VHF RX DOUBLE CAVITY 210mm	118-156	≤2.5	≥38	≥50	≥62	≥39	≥51	≥63	25	19"	685
T06090413	2 CHANNELS VHF TX DOUBLE CAVITY 210mm	118-156	≤3	≥38	≥50	≥62	≥54	≥66	≥78	10	19"	685
T06100401	3 CHANNELS VHF TX DOUBLE CAVITY 210mm	118-156	≤3	≥38	≥50	≥62	≥54	≥66	≥78	15	19"	685
T06110416	4 CHANNELS VHF TX DOUBLE CAVITY 210mm	118-156	≤3	≥38	≥50	≥62	≥54	≥66	≥78	20	19"	685
T06120439	5 CHANNELS VHF TX DOUBLE CAVITY 210mm	118-156	≤3.5	≥38	≥50	≥62	≥54	≥66	≥78	25	19"	685
T06090606	2 CHANNELS UHF RX DOUBLE CAVITY 210mm	225-400	≤2.5	≥40	≥52	≥67	≥41	≥53	≥68	10	19"	560
T06100606	3 CHANNELS UHF RX DOUBLE CAVITY 210mm	225-400	≤2.5	≥40	≥52	≥67	≥41	≥53	≥68	15	19"	560
T06110606	4 CHANNELS UHF RX DOUBLE CAVITY 210mm	225-400	≤3	≥40	≥52	≥67	≥41	≥53	≥68	20	19"	560
T06120640	5 CHANNELS UHF RX DOUBLE CAVITY 210mm	225-400	≤3	≥40	≥52	≥67	≥41	≥53	≥68	25	19"	560
T06090607	2 CHANNELS UHF TX DOUBLE CAVITY 210mm	225-400	≤3	≥40	≥52	≥67	≥56	≥68	≥83	10	19"	560
T06100607	3 CHANNELS UHF TX DOUBLE CAVITY 210mm	225-400	≤3	≥40	≥52	≥67	≥56	≥68	≥83	15	19"	560
T06110607	4 CHANNELS UHF TX DOUBLE CAVITY 210mm	225-400	≤3.5	≥40	≥52	≥67	≥56	≥68	≥83	20	19"	560
T06120641	5 CHANNELS UHF TX DOUBLE CAVITY 210mm	225-400	≤3.5	≥40	≥52	≥67	≥56	≥68	≥83	25	19"	560

Up to 12 channels available for all configurations.



# DOUBLE BRIDGE COMBINERS 150mm VHF-UHF

ATC

POLOMARCONI.IT

POLOMARCONI offers a very wide range of wireless products. Our products can be tailored according to the customer's need.

Part Number ID	Description	Frequency (MHz)	Insertion Loss (dB)	Selectivity with 1 dB Insertion loss @ $f_0 \pm 0.5\%f_0$	Selectivity with 1 dB Insertion loss @ $f_0 \pm 1\%f_0$	Selectivity with 1 dB Insertion loss @ $f_0 \pm 2\%f_0$	Isolation @ channel spacing $f_0 \pm 0.5\%f_0$ with 1dB insertion loss	Isolation @ channel spacing $f_0 \pm 1\%f_0$ with 1dB insertion loss	Isolation @ channel spacing $f_0 \pm 2\%f_0$ with 1dB insertion loss	Height Unit	Width	Depth (mm)
T06170401	2 Chs single cavity VHF combiner in d.b.c	118-156	$\leq 1.4$	$\geq 14$	$\geq 20$	$\geq 26$	$\geq 34$	$\geq 40$	$\geq 46$	8	19"	550
T06180403	3 Chs single cavity VHF combiner in d.b.c	118-156	$\leq 1.65$	$\geq 14$	$\geq 20$	$\geq 26$	$\geq 34$	$\geq 40$	$\geq 46$	12	19"	550
T06190403	4 Chs single cavity VHF combiner in d.b.c	118-156	$\leq 1.9$	$\geq 14$	$\geq 20$	$\geq 26$	$\geq 34$	$\geq 40$	$\geq 46$	16	19"	550
T06200420	5 Chs single cavity VHF combiner in d.b.c	118-156	$\leq 2.15$	$\geq 14$	$\geq 20$	$\geq 26$	$\geq 34$	$\geq 40$	$\geq 46$	20	19"	550
T06170407	2 Chs single cavity VHF combiner in d.b.c with circulator and load	118-156	$\leq 2$	$\geq 14$	$\geq 20$	$\geq 26$	$\geq 49$	$\geq 55$	$\geq 61$	8	19"	550
T06180407	3 Chs single cavity VHF combiner in d.b.c with circulator and load	118-156	$\leq 2.3$	$\geq 14$	$\geq 20$	$\geq 26$	$\geq 49$	$\geq 55$	$\geq 61$	12	19"	550
T06190408	4 Chs single cavity VHF combiner in d.b.c with circulator and load	118-156	$\leq 2.6$	$\geq 14$	$\geq 20$	$\geq 26$	$\geq 49$	$\geq 55$	$\geq 61$	16	19"	550
T06200428	5 Chs single cavity VHF combiner in d.b.c with circulator and load	118-156	$\leq 2.9$	$\geq 14$	$\geq 20$	$\geq 26$	$\geq 49$	$\geq 55$	$\geq 61$	20	19"	550
T06170604	2 Chs single cavity UHF combiner in d.b.c	225-400	$\leq 1.4$	$\geq 15$	$\geq 21$	$\geq 27$	$\geq 35$	$\geq 41$	$\geq 47$	8	19"	550
T06180605	3 Chs single cavity UHF combiner in d.b.c	225-400	$\leq 1.65$	$\geq 15$	$\geq 21$	$\geq 27$	$\geq 35$	$\geq 41$	$\geq 47$	12	19"	550
T06190605	4 Chs single cavity UHF combiner in d.b.c	225-400	$\leq 2$	$\geq 15$	$\geq 21$	$\geq 27$	$\geq 35$	$\geq 41$	$\geq 47$	16	19"	550
T06200605	5 Chs single cavity UHF combiner in d.b.c	225-400	$\leq 2.15$	$\geq 15$	$\geq 21$	$\geq 27$	$\geq 35$	$\geq 41$	$\geq 47$	20	19"	550
Part Number ID	Description	Frequency (MHz)	Insertion Loss (dB)	Selectivity with 2 dB Insertion loss @ $f_0 \pm 0.5\%f_0$	Selectivity with 2 dB Insertion loss @ $f_0 \pm 1\%f_0$	Selectivity with 2 dB Insertion loss @ $f_0 \pm 2\%f_0$	Isolation @ channel spacing $f_0 \pm 0.5\%f_0$ with 2dB insertion loss	Isolation @ channel spacing $f_0 \pm 1\%f_0$ with 2dB insertion loss	Isolation @ channel spacing $f_0 \pm 2\%f_0$ with 2dB insertion loss	Height Unit	Width	Depth (mm)
T06170408	2 Chs single cavity VHF combiner in d.b.c plus single cavity filter	118-156	$\leq 2.4$	$\geq 32$	$\geq 44$	$\geq 56$	$\geq 52$	$\geq 64$	$\geq 76$	12	19"	550
T06180408	3 Chs single cavity VHF combiner in d.b.c plus single cavity filter	118-156	$\leq 2.7$	$\geq 32$	$\geq 44$	$\geq 56$	$\geq 52$	$\geq 64$	$\geq 76$	16	19"	550
T06190409	4 Chs single cavity VHF combiner in d.b.c plus single cavity filter	118-156	$\leq 3.0$	$\geq 32$	$\geq 44$	$\geq 56$	$\geq 52$	$\geq 64$	$\geq 76$	24	19"	550
T06200436	5 Chs single cavity VHF combiner in d.b.c plus single cavity filter	118-156	$\leq 3.3$	$\geq 32$	$\geq 44$	$\geq 56$	$\geq 52$	$\geq 64$	$\geq 76$	28	19"	550
T06170409	2 Chs single cavity VHF combiner in d.b.c plus single cavity, and isolator	118-156	$\leq 3.0$	$\geq 32$	$\geq 44$	$\geq 56$	$\geq 67$	$\geq 79$	$\geq 91$	12	19"	550
T06180409	3 Chs single cavity VHF combiner in d.b.c plus single cavity and isolator	118-156	$\leq 3.3$	$\geq 32$	$\geq 44$	$\geq 56$	$\geq 67$	$\geq 79$	$\geq 91$	16	19"	550
T06190410	4 Chs single cavity VHF combiner in d.b.c plus single cavity and isolator	118-156	$\leq 3.55$	$\geq 32$	$\geq 44$	$\geq 56$	$\geq 67$	$\geq 79$	$\geq 91$	24	19"	550
T06200414	5 Chs single cavity VHF combiner in d.b.c plus single cavity and isolator	118-156	$\leq 3.8$	$\geq 32$	$\geq 44$	$\geq 56$	$\geq 67$	$\geq 79$	$\geq 91$	28	19"	550
T06170403	2 Chs dual cavity VHF combiner in d.b.c	118-156	$\leq 2.4$	$\geq 32$	$\geq 44$	$\geq 56$	$\geq 52$	$\geq 64$	$\geq 76$	12	19"	550
T06180404	3 Chs dual cavity VHF combiner in d.b.c	118-156	$\leq 2.8$	$\geq 32$	$\geq 44$	$\geq 56$	$\geq 52$	$\geq 64$	$\geq 76$	24	19"	550
T06190405	4 Chs dual cavity VHF combiner in d.b.c	118-156	$\leq 3.2$	$\geq 32$	$\geq 44$	$\geq 56$	$\geq 52$	$\geq 64$	$\geq 76$	32	19"	550
T06200401	5 Chs dual cavity VHF combiner in d.b.c	118-156	$\leq 3.5$	$\geq 32$	$\geq 44$	$\geq 56$	$\geq 52$	$\geq 64$	$\geq 76$	40	19"	550
T06170607	2 Chs single cavity UHF combiner in d.b.c plus single cavity filter	225-400	$\leq 2.4$	$\geq 32$	$\geq 45$	$\geq 60$	$\geq 52$	$\geq 65$	$\geq 80$	12	19"	550
T06180608	3 Chs single cavity UHF combiner in d.b.c plus single cavity filter	225-400	$\leq 2.7$	$\geq 32$	$\geq 45$	$\geq 60$	$\geq 52$	$\geq 65$	$\geq 80$	16	19"	550
T06190608	4 Chs single cavity UHF combiner in d.b.c plus single cavity filter	225-400	$\leq 3.0$	$\geq 32$	$\geq 45$	$\geq 60$	$\geq 52$	$\geq 65$	$\geq 80$	24	19"	550
T06200633	5 Chs single cavity UHF combiner in d.b.c plus single cavity filter	225-400	$\leq 3.2$	$\geq 32$	$\geq 45$	$\geq 60$	$\geq 52$	$\geq 65$	$\geq 80$	28	19"	550
T06170608	2 Chs single cavity UHF combiner in d.b.c plus single cavity, circulator and load	225-400	$\leq 3.0$	$\geq 32$	$\geq 45$	$\geq 60$	$\geq 52$	$\geq 80$	$\geq 95$	12	19"	550
T06180609	3 Chs single cavity UHF combiner in d.b.c plus single cavity, circulator and load	225-400	$\leq 3.25$	$\geq 32$	$\geq 45$	$\geq 60$	$\geq 52$	$\geq 80$	$\geq 95$	16	19"	550
T06190606	4 Chs single cavity UHF combiner in d.b.c plus single cavity, circulator and load	225-400	$\leq 3.5$	$\geq 32$	$\geq 45$	$\geq 60$	$\geq 52$	$\geq 80$	$\geq 95$	24	19"	550

Up to 12 channels available for all configurations.



# COMPONENTS VHF-UHF

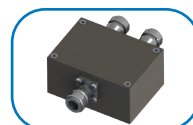
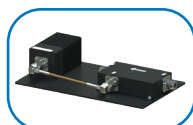
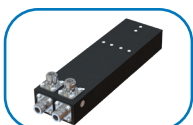
ATC

POLOMARCONI.IT

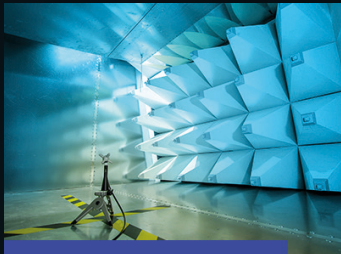
POLOMARCONI offers a very wide range of wireless products.  
Our products can be tailored according to the customer's need.



Category	Part Number ID	Description	Frequency Range (MHz)	Insertion Loss (dB) ≤	Gain (dB) ≥	Isolation (dB) ≥	Max Input Power (W) ≤	Power Supply (V)	Height Unit	Width (mm)	Depth (mm)
Multicoupler	T13060401	VHF Receiver Multicoupler 8 ways	118-137		4±1,5	20	0,1	21-32VDC	1	482,6	385
Multicoupler	T13060601	UHF Receiver Multicoupler 8 ways	225-400		4±1,5	20	0,1	21-32VDC	1	482,6	385
Multicoupler	T13060407	VHF Receiver Multicoupler 8 ways	118-137		4±1,5	20	0,1	[110-230VAC] [21-32VDC]	1	482,6	385
Multicoupler	T13060607	UHF Receiver Multicoupler 8 Ways, 230Vac	225-400		4±1,5	20	0,1	[110-230VAC] [21-32VDC]	1	482,6	385
Multicoupler	T13083008	V-UHF Broadband receiver multicoupler 6dB 16 ways + aux out	100-400		6±1,5	25	0,1	[110-230VAC] [21-32VDC]	2	482,6	276
Multicoupler	T13083033	V-UHF Broadband receiver multicoupler 6dB 16 ways	100-400		6±1,5	25	0,1	[110-230VAC] [21-32VDC]	2	482,6	276
Vswr meter	T11631406	VSWR Meter 100-400 MHz	100-400	0,1			250	20-40[VDC]		70	110
Multicoupler	T06010404	2 Chs TRX hybrid combiner	117-144	3,3		≥20	100		2	482,6	500
Multicoupler	T06010402	2 Chs VHF TX hybrid combiner with VSWR meter	118-144	4,5		≥35	100	[110-230VAC]	3	482,6	520
Multicoupler	T06010605	2 Chs UHF TX hybrid combiner with VSWR meter	225-400	5		≥65	100	[110-230VAC]	3	482,6	520
Multicoupler	T06020401	3 Chs TRX VHF hybrid combiner	118-144	4,5		≥20	100		3	482,6	520
Multicoupler	T06020601	3 Chs TX UHF hybrid combiner	225-400	7,2		≥60	100		3	482,6	520
Multicoupler	T06030411	4 Chs TRX VHF hybrid combiner	118-144	6,5		≥20	100		3	482,6	520
Multicoupler	T06030605	4 Chansels TX UHF hybrid combiner with VSWR meter	225-400	7,5		≥35	100	[110-230VAC]	3	482,6	520
Multicoupler	T06030410	4 Chansels TX VHF hybrid combiner with VSWR meter	118-144	8		≥35	100	[110-230VAC]	3	482,6	520
Filter	T05440401	VHF Lowpass Filter	118-156	0,3			100			40	104
Filter	T05460601	UHF Lowpass Filter	225-400	0,3			100			40	104
Duplexer	T06213003	Duplexer VHF 100-174 / UHF 225-512 MHz	100-174/225-512	0,5		50	200			75	134
Hybrid	T09210404	VHF 3 dB Hybrid 118-156 MHz	118-156	3±0,5		25	200			65	276
Hybrid	T09210605	UHF 3 dB Hybrid 225-400 MHz	225-400	3±0,5		25	200			65	134,5
Hybrid	T09213003	VHF/UHF 3 dB Hybrid 100-400 MHz	100-400	3±0,6		20	100			163	198
Circulator	T19120402	VHF Single Circulator 118-156 MHz	118-156	0,7		18	100			53	105
Circulator	T19530401	VHF Double Circulator 118-144 MHz	118-44	0,8		40	120			77	108
Circulator	T19130601	UHF Single Circulator 225-400 MHz	225-400	0,7		18	100			53	105
Isolator	T19330402	VHF Single Isolator 117-144 MHz	117-144	0,7		18	100			53	172
Isolator	T19330404	VHF Single Isolator 118-156 MHz	118-156	0,7		18	100			120	120
Isolator	T19430402	VHF Isolator with Double Circulator 118-156 MHz	118-156	1		40	100			145	260
Isolator	T19430404	VHF double Isolator	117-137	1		50	200				
Isolator	T19330602	UHF Single Isolator 225-400 MHz	225-400	0,9		17	100			120	120
Load	T10130204	50W Single Load	0-2000				50			50	90
Load	T10130205	100W Single Load Nf 0-2 GHz	0-2000				100			70	147
Load	T10213501	50W Double Load	0-2000				50			84	150



# INNOVATIONS FOR EACH MARKET



**R&D PROJECTS**



**PMR**



**ATC**



**TRANSPORT**



**DAS**



**LAND & NAVAL**



**M2M**



**MICROWAVE**

**POLOMARCONI.IT**®

Behind the success of POLOMARCONI.IT SpA, besides technical expertise, there is production control flow competence, research for continuous improvement, cost optimization and financial management.

KNOW HOW and ITALIAN DESIGN lead to the development of international patents. The exceptional MARKET VALUE comes from the fact that we design and implement complex and tailor-made products exclusively made in ITALY.



## HEADQUARTER

Via Quirico Filopanti, 3  
37123, Verona Italy  
Ph: **+39 035 4181900**  
Fax: **+39 035 4181999**  
Email: [info@polomarconi.it](mailto:info@polomarconi.it)  
P.IVA/C.F.: **02456270160**

## PRODUCTION SITE

Via Cristoforo Colombo, 29  
24046 Osio Sotto, Bergamo Italy

## R&D

Via Cristoforo Colombo, 31  
24046 Osio Sotto, Bergamo Italy